



ROUILLARD

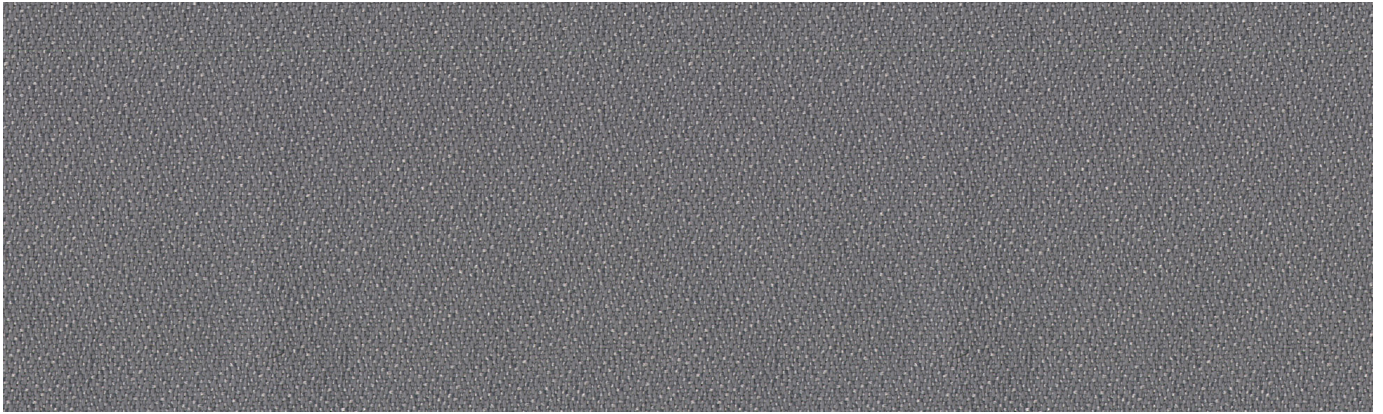
EP929-230916 Cat
4, Item 4B,4C,4D
Fabrics

Base Grade Fabrics are noted. See Dealers for
Fabric Upgrade Pricing on your item.

Base Fabric



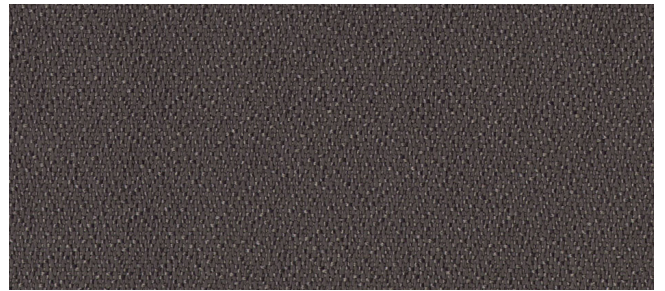
ENNIS
FABRICS



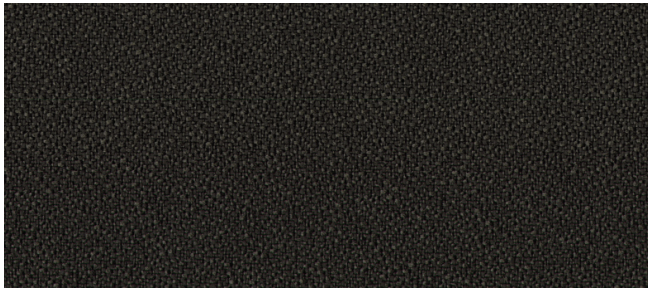
SPC CORNERBLOCK STONE
SPCCORNERBLOCKSTO



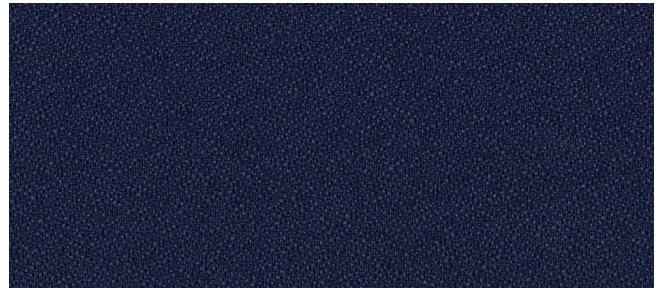
SPC CORNERBLOCK RYE
SPCCORNERBLOCKRYE



908 CHARCOAL
CORNE908



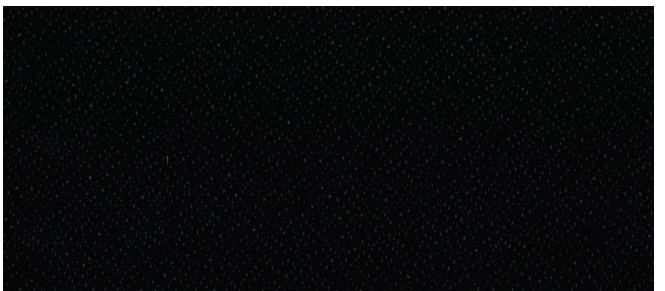
SPC CORNERBLOCK NICKEL
SPCCORNERBLOCKNIC



SPC CORNERBLOCK STORM
SPCCORNERBLOCKSTORM



308 NAVY
CORNE308



9009 BLACK
CORNE9009

BASE FABRIC

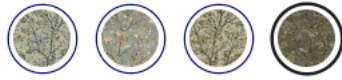
ENNIS FABRICS

EDEN

EDEN14



COLOR — 14 Teak



BASE FABRIC



ENNIS FABRICS



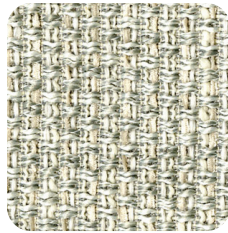
LOUIS



41 APRICOT



6003 SNOW



902 GAINSBORO



93 WIND



9006 GRAPHITE



31 CRASHING BLUE



3003 DENIM BLUE



9003 DIM GREY



608 OLD LACE



17 FIRE



9009 JET BLACK



908 DOMINOS



7003 BLUE WASH



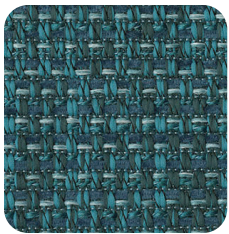
37 TEAL MIX



5009 GOLD TWIST



36 SUN KISSED



34 TURQUOISE



77 MINERAL MIX

UPGRADED PATTERNED FABRICS - ELECTRONIC LINKS ONLY
MEMO SAMPLES AVAILALBE UPON REQUEST

- Array : https://ennisfabrics.com/products/array?_pos=2&_sid=c9feecd38&_ss=r
- Aureole: <https://ennisfabrics.com/products/aureole?variant=42467129360571>
- Cabi: <https://ennisfabrics.com/products/cabi?variant=42467155345595>
- Candid: <https://ennisfabrics.com/products/candid?variant=42467159408827>
- Captiva: <https://ennisfabrics.com/products/captiva?variant=42467166027963>
- Collier: <https://ennisfabrics.com/products/collier?variant=42467209871547>
- Conquest: <https://ennisfabrics.com/products/conquest?variant=42467215147195>
- Copeland: <https://ennisfabrics.com/products/copeland-sample?variant=44630553198779>
- Daybreak: <https://ennisfabrics.com/products/daybreak?variant=42467233202363>
- Dion: <https://ennisfabrics.com/products/dion?variant=42467245818043>
- Dover: <https://ennisfabrics.com/products/dover?variant=42467252109499>
- Eden: <https://ennisfabrics.com/products/eden?variant=42467260825787>
- Intent: https://ennisfabrics.com/products/intent?_pos=1&_sid=187bd687b&_ss=r
- Jamboree: https://ennisfabrics.com/products/jamboree?_pos=1&_sid=fb0ad5ac9&_ss=r
- Imperial: <https://ennisfabrics.com/products/imperial?variant=42467394945211>
- Logic: https://ennisfabrics.com/products/logic?_pos=1&_sid=90d907099&_ss=r
- Madeline: https://ennisfabrics.com/products/madeline?_pos=1&_sid=a612110e0&_ss=r
- Maverick: <https://ennisfabrics.com/products/maverick?variant=4247072522258>
- Mystique: <https://ennisfabrics.com/products/mystique?variant=42470735347899>
- Parody: https://ennisfabrics.com/products/parody?_pos=1&_sid=64b2f5bcc&_ss=r
- Prism: <https://ennisfabrics.com/products/prism?variant=42470756417723>
- Saber: <https://ennisfabrics.com/products/saber?variant=44625522557115>
- Talia: https://ennisfabrics.com/products/talia?_pos=1&_sid=abdb523f4&_ss=r
- Tic Tac: https://ennisfabrics.com/products/tic-tac?_pos=1&_sid=d175fdc5d&_ss=r
- Tilt: <https://ennisfabrics.com/products/tilt?variant=42470800916667>
- Unwind: <https://ennisfabrics.com/products/unwind?variant=44625523310779>
- Vincent: https://ennisfabrics.com/products/vincent?_pos=1&_sid=4ea74408b&_ss=r
- Whirligig: <https://ennisfabrics.com/products/whirligig-sample?variant=43494254903483>



ENNIS
FABRICS



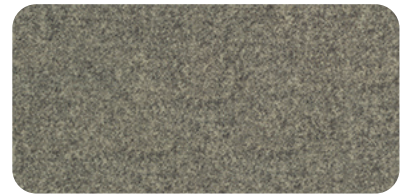
ARLO



601 PEARL



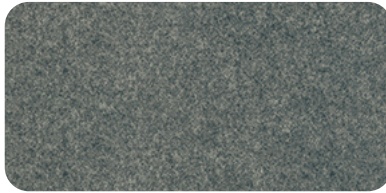
90 LIMESTONE



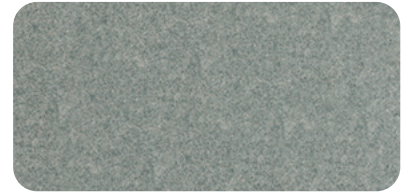
96 FLAX



603 MUSHROOM



908 CHARCOAL



93 SEAL



91 SILVER



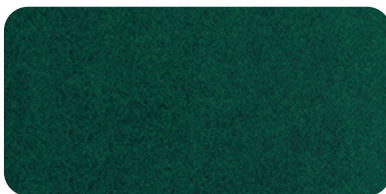
82 TRUFFLE



62 OATMEAL



24 ALPINE



205 MERMAID



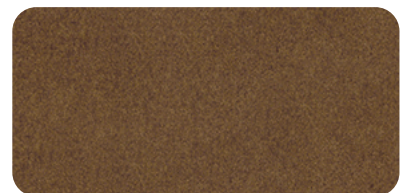
308 MIDNIGHT



306 PETROL



14 CRANBERRY



84 NUTMEG



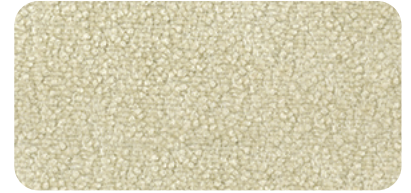
ENNIS
FABRICS



COMRADE



601 SNOW



63 LINEN



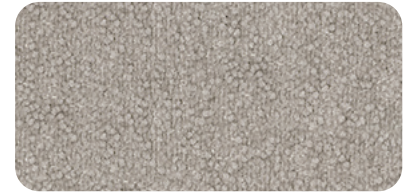
62 BIRCH



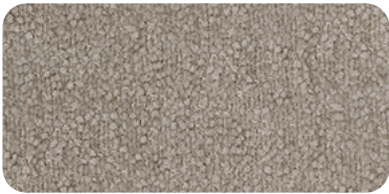
82 UMBER



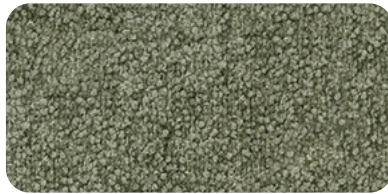
905 IRON



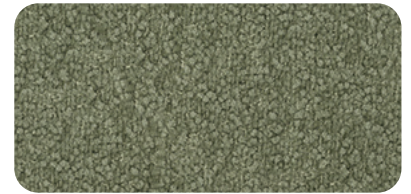
902 MERCURY



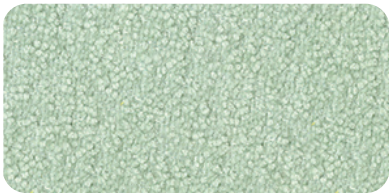
84 TEAK



205 OLIVE



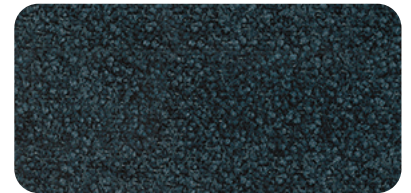
24 ALPINE



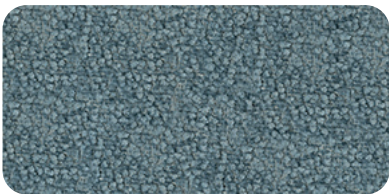
31 DUCK EGG



909 SHADOW



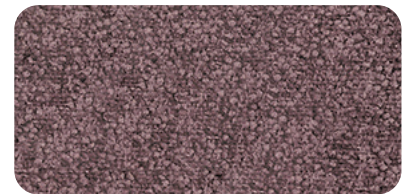
309 MIDNIGHT



306 TRUE BLUE



57 MARIGOLD



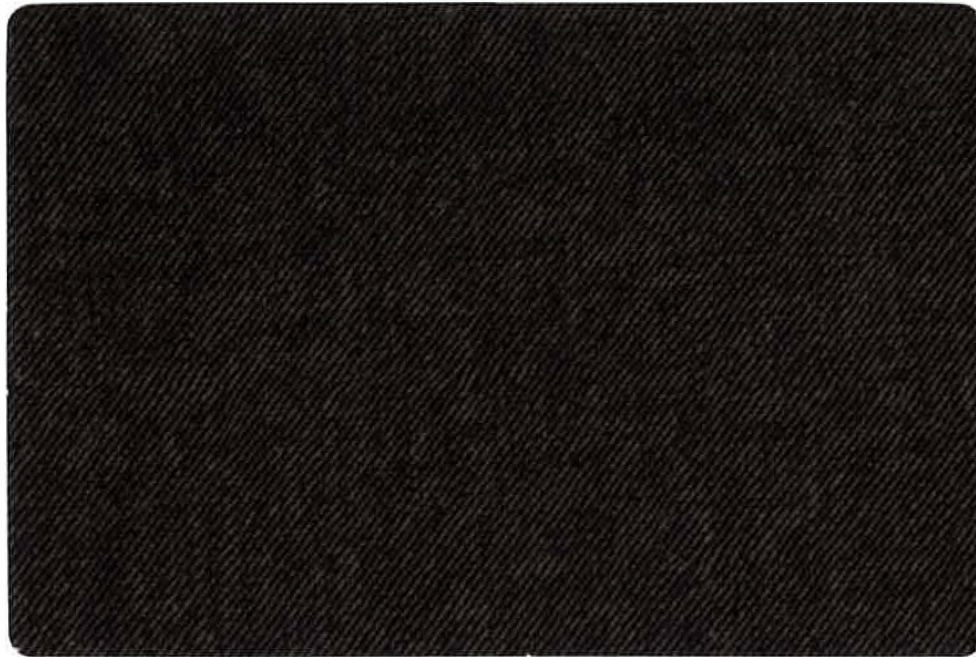
17 RAISIN



ROUILLARD



LOFT



85 CHARCOAL



22 GRASS



88 GUNMETAL



Discontinued

34 AQUA



91 SILVERSMITH



97 METAL



902 DIAMOND



Discontinued

37 OCEAN TEAL



606 SANDY BROWN



9009 BLACK



99 CEMENT



28 CACTUS



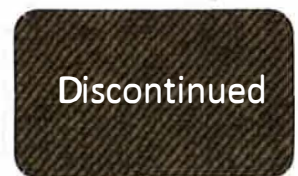
109 WINE



305 SLATE BLUE

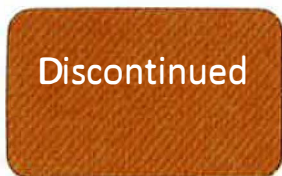


805 QUARRY



Discontinued

817 MID BROWN



Discontinued

44 TANGERINE



3006 ROYAL BLUE



87 FUDGE



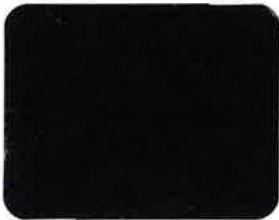
807 COCOA

ROUILLARD GRADE

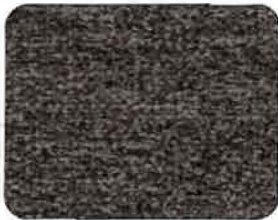
J. ENNIS FABRICS



91 NICKEL



9009 ONYX



94 GRAY



908 GUNMETAL



44 APRICOT



5006 MARIGOLD



405 NUTMEG



608 SAND



6009 BURLAP



8009 JAVA



Discontinued

2009 FERN



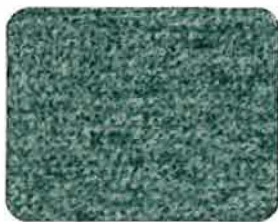
21 LEAF



308 DENIM



302 DELFT



202 ASPEN

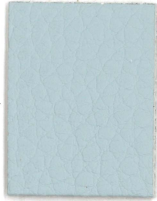


1003 ROSE

ROUILLARD GR

ROUILLARD

J. ENNIS FABRICS



37
Lagoon



1009
Plum



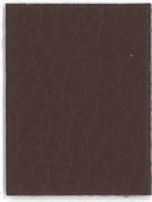
3006
Navy



54
Citron



3003
Pacific Blue



11
Brick



108
Wine



14
Rust



17
Garnet



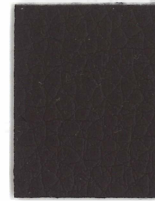
205
Sprig



3822
White



61
Vanilla



87
Chestnut



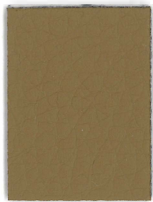
805
Bisque



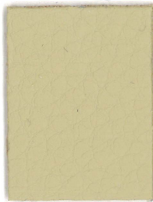
84
Earth



802
Tan



608
Sandstone



605
Parchment



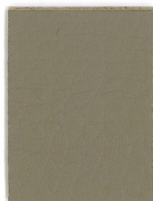
6003
Cream



8020
Chocolate



808
Mocha



3948
Taupe



9003
Grey



95
Quicksilver



905
Steel

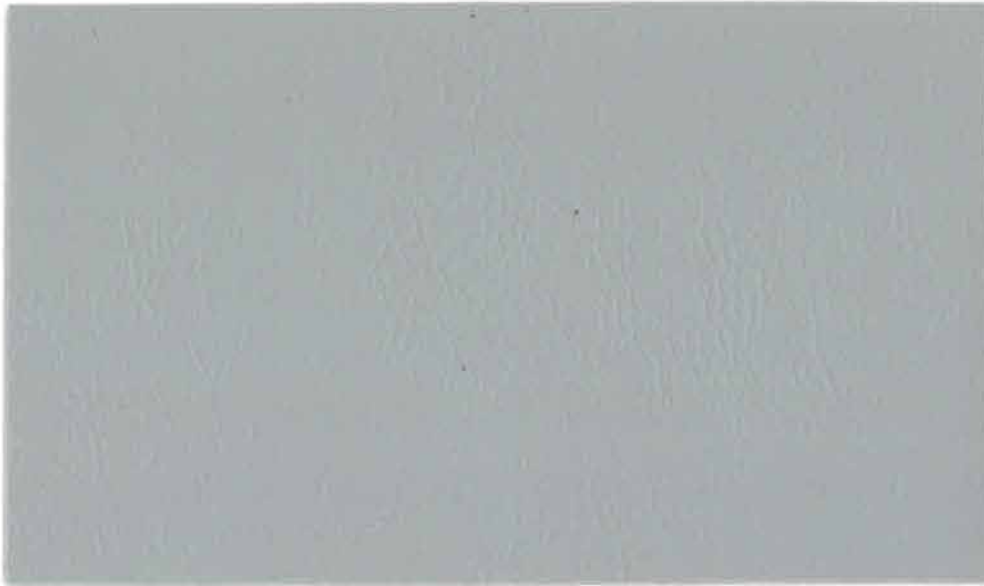


6009
Chinchilla



9009
Black

CHALLENGER



91 DOVE



ENDUREPEL™
ARMOUR



61 WHITE CAP



602 MYSTIC WHITE



63 VANILLA



605 CREAM



903 FOG



609 TAUPE



802 MOCHA



805 BARK



86 EARTH



87 CHESTNUT



809 CHOCOLATE



902 SEAGULL



905 STEEL



97 SLATE



908 CHINCHILLA
WITH ENCOOL 



909 RAVEN
WITH ENCOOL 



Automotive
(Automobile)



Corporate
(Entreprise)



Education
(Éducation)



Fitness
(Aptitude)



Hospitality
(Hospitalité)



Healthcare
(Soins de santé)



Marine
(Marin)



Recreational Vehicle
(Véhicule récréatif)



Residential
(Résidentiel)



37 SMOKEY BLUE



303 DENIM BLUE



35 ROYAL
WITH ENCOOL



306 NAVAL BLUE
WITH ENCOOL



308 MIDNIGHT BLUE
WITH ENCOOL



31 LAGOON



54 CITRON



21 MEADOW



205 SPRING



24 DEEP TEAL



44 PUMPKIN SPICE



14 CHERRY RED



17 GARNET



108 WINE



109 PLUM



66 DIAMOND



64 PEARL



102 CHAMPAGNE



34 SPA



83 TAN



804 AMBER



88 TOBACCO



98 CHARCOAL

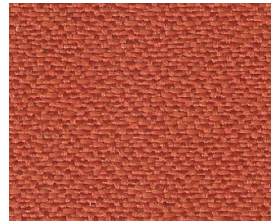
ENCOOL technology keeps Challenger's darkest colors up to 10% cooler in direct sunlight than traditional PVC fabrics.
La technologie ENCOOL permet de garder notre vinyle Challenger, dans les couleurs les plus foncées, jusqu'à 10% plus frais qu'un PVC traditionnel lorsqu'il est exposé directement au soleil.

GEO. SHEARD FABRICS



Performance with Style

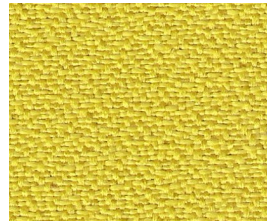
GENESIS



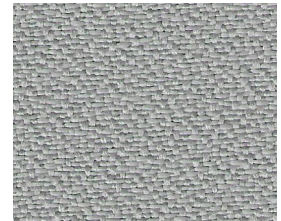
GS705 Firecracker



GS512 Elektra



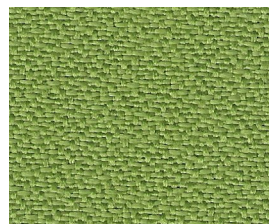
GS203 Sunlight



GS803 Cinder



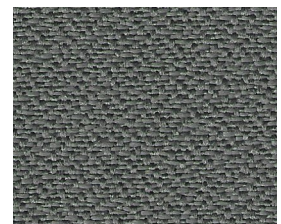
GS306 Lipstick



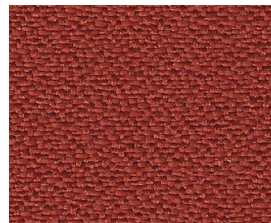
GS502 Jade



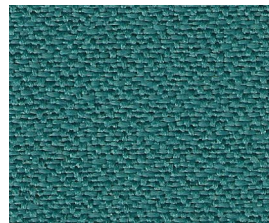
GS101 Poplar



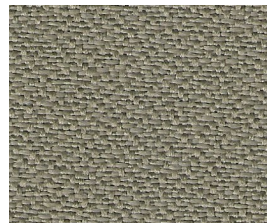
GS802 Moonwalk



GS310 Cayenne



GS511 Aqua



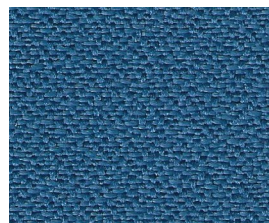
GS102 Flax



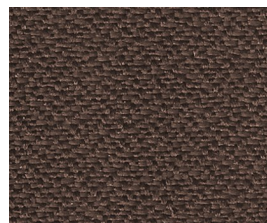
GS814 Carbon



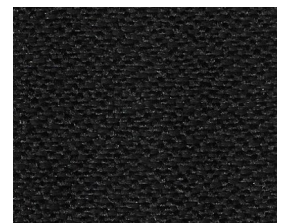
GS709 Port



GS404 Atmosphere



GS704 Java



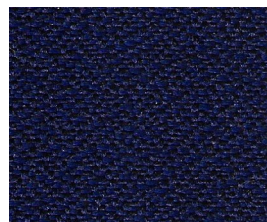
GS903 Flint



GS304 Chianti



GS410 Glacier



GS406 Eclipse

NOTE

Colors as they appear on this specification sheet may be slightly different than the actual fabrics. Please request fabric samples to obtain a more accurate rendition of colors.



3009 MIDNIGHT



309 NAVAL



38 CAPITOL BLUE



35 CORNFLOWER



305 DEEP SEA



39 BAY



34 TEAL



302 SPA



308 DENIM



37 SAPPHIRE



30 ROBIN'S EGG



90 ASH



21 MOJITO



2008 CHARTREUSE



205 APPLE



26 OLIVE



82 ARMY



5006 BUTTER



1009 AUBERGINE



1008 PLUM



17 MULBERRY



11 CORAL



1006 BURGUNDY



18 RASPBERRY



8004 MOCHA



9009 CAVIAR



903 SLATE



99 MINERAL



92 PEWTER



97 CINDER



601 OYSTER



62 CREAM



5577 SUNSHINE



805 SAFARI



47 CARMEL



8002 CAFE AU LAIT



806 COGNAC



202 SAGE



902 PEARL



81 CHROME



8003 WHEAT



8009 ESPRESSO



9008 JAVA



407 CINNAMON



801 RUSSET

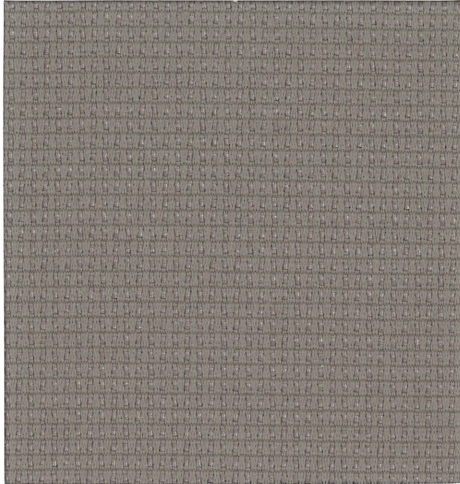


41 COPPER

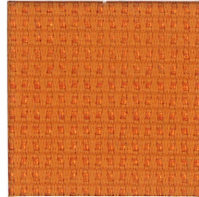


44 MELON

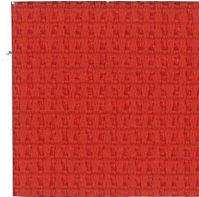
To the Point 4732



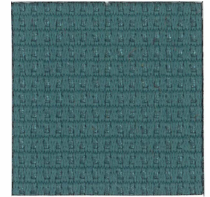
Gravel
1413



Marigold
1407



Amaryllis
1408



Bluegrass
1403



Azalea
1410



Currant
1411



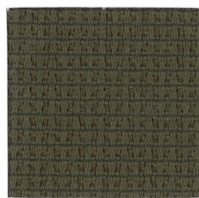
Cobalt
1402



Almond
1414



Moss
1404



Cattail
1417



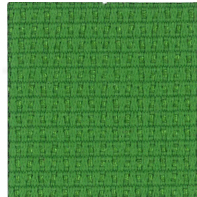
Elderberry
1409



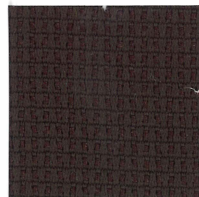
Indigo
1401



Kiwi
1405



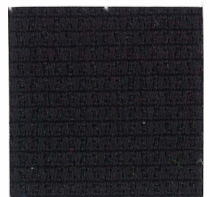
Parrot
1406



Coffee
1416



Cinder
1412



Ebony
1415

